

 **SCHRIEVER®**

verbindet.



A photograph of a modern office interior with large windows and a red overlay. The red overlay covers the bottom half of the image, creating a semi-transparent effect. The text is white and bold, standing out against the red background.

# CORPORATE STRUCTURE

---

## NUMBER OF EMPLOYEES

PRODUCTION: \_\_\_\_\_48

PURCHASE/SALES/CONTROLLING: \_\_\_\_\_9

QUALITY MANAGMENT: \_\_\_\_\_4

DEVELOPMENT: \_\_\_\_\_1

OTHER: \_\_\_\_\_18

TRAINEES: \_\_\_\_\_6



# ANNUAL SALES

---

16,7 MIO. EUR

2022

15,5 MIO. EUR

2021

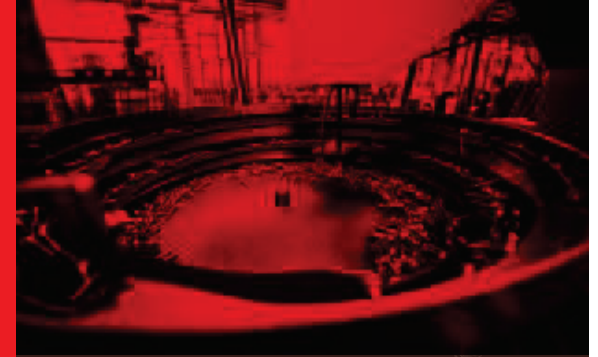
12,5 MIO. EUR

2020

13,3 MIO. EUR

2019

# SCHRIEVER-BRANDS

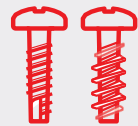


## PRODUCTS



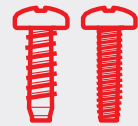
Thermoplastic screws

**STS<sup>®</sup>**  
**STS<sup>®</sup> plus**



Thermosetting screws

**SDS<sup>®</sup>**  
**STS<sup>®</sup> plus SN**



Light-metal screws

**SLS<sup>®</sup>**  
**S-trax<sup>®</sup>**



Thin-sheet screws

**SBS<sup>®</sup>**



Metric  
Thread-forming screws

**SGF<sup>®</sup>**



Micro screws

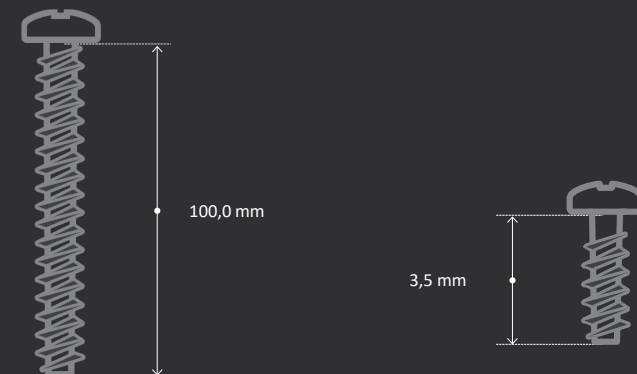
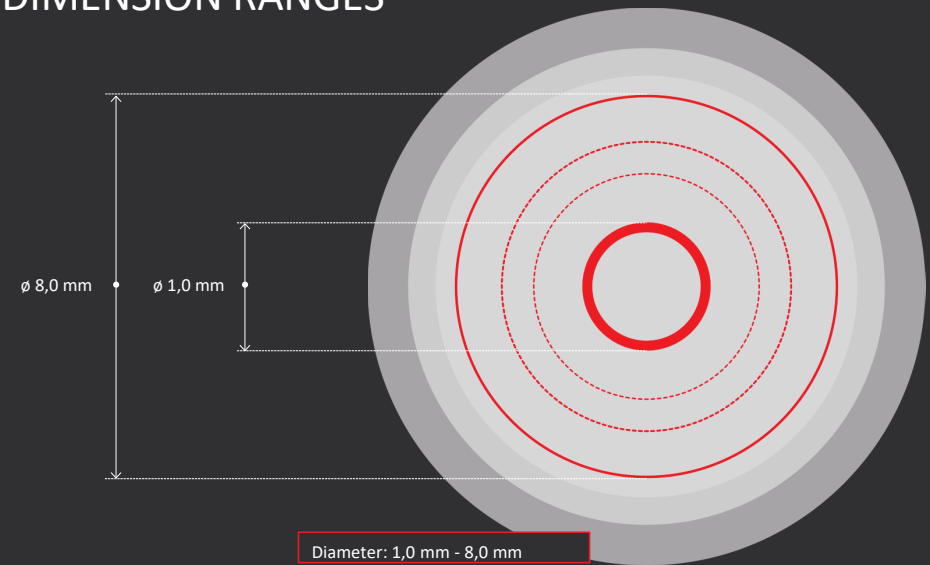
**S-Mikro<sup>®</sup>**



Drawing screws

**S-self<sup>®</sup>**

## DIMENSION RANGES

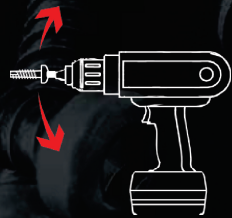






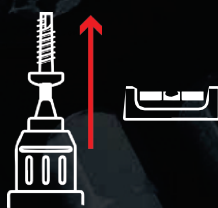
## TOBI® DRIVE-SYSTEM

The new drive system includes the drive tool (bit) and the screw head profile (drive) with an increased usable contact area, axial alignment between screw and tool, and reliable retention of screw head profile and tool. The TOBI®-Drive system reduces abrasion of your tools and simplifies the installation process enormously.



holding the screw

+



axially aligned

+



more contact surface

=



less abrasion

# MACHINERY AND EQUIPMENT

44

Double-blow headers

7

Flat rolling machines

Circular rolling machines

Multi-stage forming machines  
(2-Matrices / 3-stroke)

6

Rotary presses  
(3-Matrices / 2-stroke)

Trimming presses

Div.

Cutting finishing machines

(Head slotting machine / Pointing machine)

Camera sorting / Roller sorter

36

3

1

## INDUSTRIES SUPPLIED

Revenue share:

Plastics technology 30%

Electrical technology 20%

Automotive 15%

Medical technology 5%

Wholesale business 25%



# QUALITY MANAGEMENT

---

## QUALITY ASSURANCE

- **Certified according to ISO9001:2015, IATF 16949:2016**
- **Comprehensive inspection plans for quality assurance**
- **Systematic Q-control during the manufacturing process (SPC)**
- **Procedure for supplier evaluation**  
**(Criteria: on-time delivery, complaints, soft skills)**
  
- **Initial sampling:**
  - › PPAP (Level 1 to 5) (Production Part Approval Process)
  - › EMPB according VDA Level 2 and 3 (first sample test report)



# QUALITY MANAGMENT

---

## QUALITY ASSURANCE

### > **Inspection certificates:**

- > Acceptance test certificate 3.1
- > Salt spray test
- > Material certificates
- > Hardening protocol
- > Surface certificates (with layer thickness)

### > **Complaint processing:**

- > 8D-Report
- > 5 Why

### > **Delivery quality according to EIFI Directive (04/2009)**

- > Unsorted: 200 ppm
- > Camera sorted: 10 ppm/Merkmal
- > Manual (Kopf Ø): 100 ppm





A black and white photograph of two men in a modern office setting, overlaid with a red tint. The man on the left wears glasses and a dark hoodie with 'SCHRIEVER' and 'ARTIST' logos. The man on the right is bald and wears a dark zip-up jacket with 'SCHRIEVER' and 'SHR' logos. They are standing at a long table, looking at a laptop and writing on papers. The background shows a glass-walled office with a perforated ceiling.

# SCHRIEVER IS CONNECTED WITH...

- NATIONAL AND INTERNATIONAL RETAILERS
- TECHNICAL TESTING LABORATORIES
- THE PLASTICS INSTITUTE

OUR COMPANY IS PREPARED TO MEET A DEFINED PROJECT, JOINT DEVELOPMENT, RESEARCH AND VALUE ANALYSIS.

# LOGISTICS



**SCHRIEVER is prepared....**

- ... to calculate and deliver optimal batch sizes.
- ... to stock up on your annual requirements.
- ... to develop a joint logistics concept with its customers.





# EXPORT



approximately **25%**  
of our products are  
delivered abroad



A black and white photograph of a modern office interior. The space features large windows, glass partitions, and a desk with a chair. A red horizontal bar is overlaid across the middle of the image, containing the title text.

# ENVIROMENTAL RESPONSIBILITY

CONSTRUCTION AND CONNECTION OF A PHOTOVOLTAIC SYSTEM IN 2022

SELF-AUDIT FOR ENVIRONMENTAL PROTECTION AND OCCUPATIONAL  
SAFETY STARTING JUNE 2023

RAISING EMPLOYESS' AWARENESS OF ENVIROMENTAL PROTECTION AND  
ACTING ENVIROMENTALLY CONSCIOUS (E.G. PAPERLESS OFFICE)

SUPPLIER SELECTION UNDER CONSIDERATION OF ENVIROMENTAL TECHNOLOGY ASPECTS  
(E.G. SHORT TRANSPORT DISTANCES)

THE COMPANY BUILDING WAS AWARDED FOR ITS ENERGY EFFICIENCY.  
(HEAT RECOVERY, GROUND COLLECTORS, EFFICIENT USE OF DAYLIGHT, MODERN LIGHTING  
SYSTEMS, ETC.)

COMPLIANCE WITH CONFIRMATION OF CURRENT ENVIROMENTAL  
REGULATIONS AND REQUIREMENTS ACCORDING TO ORDINANCES (EG) NO.  
1907/2006 (REGULATION) AND THE DIRECTIVE 2002/95/EG (ROHS 2)

# SOCIAL RESPONSIBILITY

---

## SCHRIEVER...

... is committed to ethical business conduct and follows the relevant national and international laws regarding the respect of human rights in the sense of internationally recognized ethical standards.

---

...makes sure, that our suppliers also have a social responsibility towards their employees.

---

... employees act in accordance with the code of conduct specified by the management and anti-corruption policies.



# SCHRIEVER-BRANDS

---



SCHRIEVER®  
**TALENT  
SCHMIEDE**

Our SCHRIEVER® Talentschmiede offers career changers, future trainees and students a training partner for their professional future and career planning.







## CONTACT PERSONS

---



### Senior Managment:

Jan Schriever

Tel.: 0 23 51 / 97 83 30

[jschriever@schriever-schrauben.de](mailto:jschriever@schriever-schrauben.de)

### Quality Management:

Timmy Müller

Tel.: 0 23 51 / 97 83 23

[tmueller@schriever-schrauben.de](mailto:tmueller@schriever-schrauben.de)



### Sales Managment:

Michael Ricker

Tel.: 0 23 51 / 97 83 28

[mricker@schriever-schrauben.de](mailto:mricker@schriever-schrauben.de)

### Technical Director:

Guido Geyer

Tel.: 0 23 51 / 97 83 18

[ggeyer@schriever-schrauben.de](mailto:ggeyer@schriever-schrauben.de)





# GENERAL INFORMATION

---

Hans Schriever GmbH & Co. KG  
Hoher Hagen 5  
58513 Lüdenscheid  
Germany

Tel: 02351 9783 0  
Fax: 02351 9783 33

[www.schriever-schrauben.de](http://www.schriever-schrauben.de)  
[info@schriever-schrauben.de](mailto:info@schriever-schrauben.de)